

# RS1200P FRAMER

*"The LGS Industry's most cost-effective Multi-Profile Machine for a Total Roofing Solution"*

## Manufacturing Solution up to 1.2mm (18ga) Thickness

Suitable for a factory-based Operation or On-Site Mobile Facility for precision fast reliable Cold Rolled Steel Frame Manufacturing

A wide range of LGS Roof Construction Solutions  
Roof Trusses | Roof Purlins | Ceiling Battens

## Typical Applications

The RS1200P Framer will manufacture LGS Frame Profiles up to 1.2mm (18ga) Thickness for Roofing Solution of various construction projects.

- Roof Trusses for various construction projects
- Roof Purlins for Trusses
- Ceiling Battens for Cladding

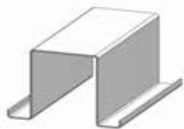
## PROFILE OPTIONS AVAILABLE

Ceiling Batten	15mm Lip   42mm Web   22mm Flange
	5/8" Lip   1 5/8" Web   7/8" Flange
Roof Purlin	15mm Lip   42mm Web   40mm Flange
	5/8" Lip   1 5/8" Web   1 5/8" Flange
Roof Truss	15mm Lip   42mm Web   55mm Flange
	5/8" Lip   1 5/8" Web   2 1/8" Flange

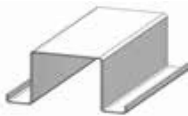
## PROFILE THICKNESS RANGE

The RS1200P Framer manufacture the profile in a thickness from 0.55mm (25ga) to 1.2mm (18ga)

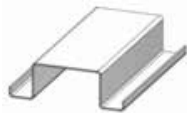
## ARKITECH TRUSS | PURLIN | BATTEN



0.75mm to 1.2mm



0.75mm to 1.2mm



0.55mm to 1.0mm



## ARKITECH RS1200P FRAMER

ALL NECESSARY OPERATIONS INCLUDED

The RS1200P Framer is fitted as Standard with (7) Stations and with additional (1) Spare Hydraulic Tool Station Bay

Our RS1200P Framer is a fully featured cost-effective machine with all the tool stations you need to make this a very versatile manufacturing system.

The RS1200P is a heavy-duty framing machine of robust construction, proven reliability, efficiency and performance

## VARIABLE FLANGE HEIGHT

The RS1200P Framer Profile Flange heights are variable from 22mm (7/8") to 55mm (2 1/8") with a simple adjustment.

## ARKITECH DC2500 DE-COILER

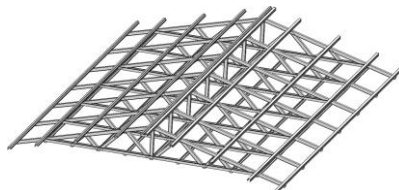
The RS1200P Technology Package includes the DC2500 Automatic Feed 2.5 Ton (5500 lb) De-Coiler controlled by a Laser Sensor. The De-Coiler with Electronic Variable Speed Soft/Stop Operation in both directions and a Hand-Held Remote Control at the RS1200P Framer.



## YOUR TECHNOLOGY PACKAGE IS INCLUSIVE OF

- Arkitech Design and Detailing Software License
- Arkitech Manufacturing Software - Installed into the On-board PC/Monitor
- Spare Parts Kits (1) Pack Consumables Parts and (1) Pack Adjustment Tools
- Commissioning and Training for the RS1200P Framer
- Training Session at your Premises/Factory for our Arkitech Design and Detailing Software
- Software and Framer Technical Support

## ARKITECH Precision Light Steel Framing System



Cut | Flange Connection 1 | Flange Connection 2 | Web Bolt Hole | Lip Cut | Swage | Notch

