

RS1600P FRAMER

"The LGS Industry's most cost-effective Multi-Profile Machine for a Total Roofing Solution"

MANUFACTURING SOLUTION UP TO 1.6mm (16ga)

Suitable for a factory-based operation or on-site mobile facility for precision fast reliable cold rolled Steel Frame Manufacturing

A wide range of LGS roof construction solutions
Roof Trusses | Roof Purlins | Ceiling Battens

TYPICAL APPLICATIONS

The RS1600P Framer manufactures LGS frame profiles up to 1.2mm (16ga) thickness for roofing solutions of various construction projects:

- Roof trusses for various construction projects
- Roof purlins for trusses
- Ceiling battens for cladding

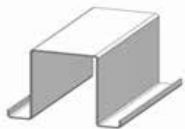
PROFILE RANGE

Ceiling batten	15mm Lip 42mm Web 22mm Flange
	5/8" Lip 1 5/8" Web 7/8" Flange
Roof purlin	15mm Lip 42mm Web 40mm Flange
	5/8" Lip 1 5/8" Web 1 5/8" Flange
Roof truss	15mm Lip 42mm Web 55mm Flange
	5/8" Lip 1 5/8" Web 2 1/8" Flange

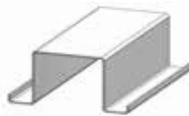
PROFILE THICKNESS RANGE

The RS1600P Framer manufactures profiles in a thickness from 0.75 (22ga) to 1.6mm (16ga).

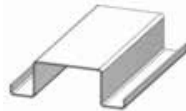
ARKITECH TRUSS | PURLIN | BATTEN



0.75 to 1.2mm



0.75mm to 1.2mm



0.75mm to 1.2mm



ARKITECH RS1600P FRAMER

ALL NECESSARY OPERATIONS INCLUDED

The RS1200P Framer is equipped as standard with 7 stations and with 1 additional spare hydraulic tool station bay.

Our RS1600P Framer is a fully featured as well as cost-effective machine with all needed tool stations to make this a very versatile manufacturing system.

The RS1600P is a heavy-duty framing machine of robust construction, proven reliability, efficiency and performance.

VARIABLE FLANGE HEIGHT

The RS1600P Framer profile flange heights are variable from 22 (7/8") to 55mm (2 1/8") with a simple adjustment.

ARKITECH DC2500 DECOILER

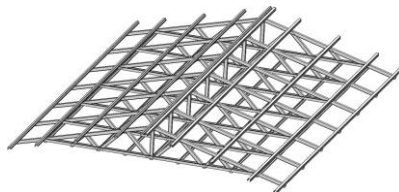
The RS1600P Technology Package includes the DC2500 Automatic Feed 2.5 tons (5500lb) decoiler controlled by a laser sensor. The decoiler disposes of a soft stop operation with electronic variable speed in both directions and a hand-held remote control at the RS1600P Framer.



YOUR TECHNOLOGY PACKAGE IS INCLUSIVE OF

- Arkitech Design and Detailing Software License
- Arkitech Manufacturing Software - Installed into the on-board PC/Monitor
- 1 Spare Parts Kits, 1 Pack Consumable Parts and 1 Pack Adjustment Tools
- Commissioning and Training for the RS1600P Framer
- Training Sessions at customer premises for our Arkitech Design and Detailing Software
- Software and Framer Technical Support

ARKITECH Precision Light Steel Framing System



Cut | Flange Connection 1 | Flange Connection 2 | Web Bolt Hole | Lip Cut | Swage | Notch

