

RS1600P FRAMER

"The LGS Industry's most cost-effective Multi-Profile Machine for a Total Roofing Solution"

Manufacturing Solution up to 1.6mm (16ga) Thickness

Suitable for a factory-based Operation or On-Site Mobile Facility for precision fast reliable Cold Rolled Steel Frame Manufacturing

A wide range of LGS Roof Construction Solutions
Roof Trusses | Roof Purlins | Ceiling Battens

Typical Applications

The RS1600P Framer will manufacture LGS Frame Profiles up to 1.2mm (16ga) Thickness for Roofing Solution of various construction projects.

- Roof Trusses for various construction projects
- Roof Purlins for Trusses
- Ceiling Battens for Cladding

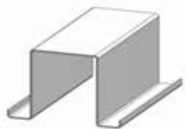
PROFILE OPTIONS AVAILABLE

Ceiling Batten	15mm Lip 42mm Web 22mm Flange
	5/8" Lip 1 5/8" Web 7/8" Flange
Roof Purlin	15mm Lip 42mm Web 40mm Flange
	5/8" Lip 1 5/8" Web 1 5/8" Flange
Roof Truss	15mm Lip 42mm Web 55mm Flange
	5/8" Lip 1 5/8" Web 2 1/8" Flange

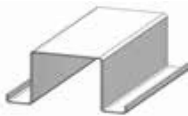
PROFILE THICKNESS RANGE

The RS1600P Framer manufacture the profile in a thickness from 0.75mm (22ga) to 1.6mm (16ga)

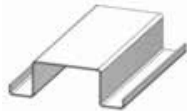
ARKITECH TRUSS | PURLIN | BATTEN



0.75mm to 1.2mm



0.75mm to 1.2mm



0.55mm to 1.0mm



ARKITECH RS1600P FRAMER

ALL NECESSARY OPERATIONS INCLUDED

The RS1600P Framer is fitted as Standard with (7) Stations and with additional (1) Spare Hydraulic Tool Station Bay

Our RS1600P Framer is a fully featured cost-effective machine with all the tool stations you need to make this a very versatile manufacturing system.

The RS1600P is a heavy-duty framing machine of robust construction, proven reliability, efficiency and performance

VARIABLE FLANGE HEIGHT

The RS1600P Framer Profile Flange heights are variable from 22mm (7/8") to 55mm (2 1/8") with a simple adjustment.

ARKITECH DC2500 DE-COILER

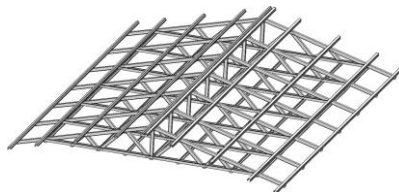
The RS1600P Technology Package includes the DC2500 Automatic Feed 2.5 Ton (5500 lb) De-Coiler controlled by a Laser Sensor. The De-Coiler with Electronic Variable Speed Soft/Stop Operation in both directions and a Hand-Held Remote Control at the RS1600P Framer.



YOUR TECHNOLOGY PACKAGE IS INCLUSIVE OF

- Arkitech Design and Detailing Software License
- Arkitech Manufacturing Software - Installed into the On-board PC/Monitor
- Spare Parts Kits (1) Pack Consumables Parts and (1) Pack Adjustment Tools
- Commissioning and Training for the RS1600P Framer
- Training Session at your Premises/Factory for our Arkitech Design and Detailing Software
- Software and Framer Technical Support

ARKITECH Precision Light Steel Framing System



Cut | Flange Connection 1 | Flange Connection 2 | Web Bolt Hole | Lip Cut | Swage | Notch

