

# MF2500P FRAMER

*"The LGS Industry's most cost-effective solution for Multi Profile Manufacturing"*

## Manufacturing Solution up to 2.5mm (12ga) Thickness

Suitable for a factory-based Operation for precision fast reliable Cold Rolled eight (8) Selected Profile tools set for Steel Frame Manufacturing

A wide range of LGS Construction Solutions  
Wall Frames | Joists | Trusses | Roof | Ceiling | Header

## Typical Applications

The MF2500P Framer will manufacture LGS Frame Profiles up to 2.5mm (12ga) Thickness for construction projects ranging from Single Level up to Multi Level LGS Structures.

- Residential & Affordable Housing Projects
- Multi-Storey Buildings
- Prefabricated Offices
- Bathroom POD Modular Constructions
- Industrial Storage Units
- Floor Joists of Buildings
- Portal Frames for Warehouses and Factory Projects
- Modular Constructions

## PROFILE RANGE

75mm | 90mm | 100mm | 140mm  
150mm | 200mm | 250mm | 300mm  
3" | 3½" | 4" | 5½" | 6" | 8" | 10" | 12"

*MF2500P Framer can manufacture profile web sizes 75mm (3") to 300mm (12") with automatic configuration*

## PROFILE THICKNESS RANGE

The MF2500P Framer manufacture the profile in a thickness from 0.75mm (22ga) to 2.5mm (12ga)

**ARKITECH** have a wide range of Optional Profile Operations

*We can manufacture a Custom Tool Station Operation*



## ARKITECH MF2500P FRAMER

**EXPANDABLE FEATURE - Optional Tool Operations**  
The MF2500P Framer is fitted with (18) Hydraulic Station Bays as Standard in Total and (16) Stations are installed as Standard Processes of the Framer.

MF2500P Framer is a fully featured cost-effective machine with all the tool stations you need to make this a very versatile manufacturing system for eight selected profiles. More Profiles can be added Per Request.

The MF2500P is a heavy-duty framing machine of robust construction, proven reliability, efficiency and performance MF2500P is automatically configured to required Profile Web Size with a software-controlled servo motor drive.

## VARIABLE FLANGE HEIGHT

The MF2500P Framer Profile Flange heights are variable from 41mm (1½") to 75mm (3") with a simple adjustment.

## ARKITECH DC4000 DE-COILER

The MF2500P Technology Package includes the DC4000 Automatic Feed 4.0 Ton (8800lb) De-Coiler controlled by a Laser Sensor. The De-Coiler with Electronic Variable Speed Soft/Stop Operation in both directions and a Hand-Held Remote Control at the MF2500P Framer.



## YOUR TECHNOLOGY PACKAGE IS INCLUSIVE OF

- Arkitech Design and Detailing Software License
- Arkitech Manufacturing Software - Installed into the On-board PC/Monitor
- Spare Parts Kits (1) Pack Consumables Parts and (1) Pack Adjustment Tools
- Commissioning and Training for the MF2500P Framer
- Training Session at your Premises/Factory for our Arkitech Design and Detailing Software
- Software and Framer Technical Support

## ARKITECH Precision Light Steel Framing System



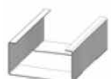
Cut



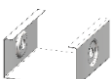
Pre Cut



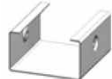
Notch



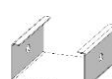
Dimpled Flange Bolt



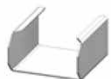
Dimpled Screw/Rivet



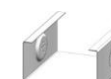
Flange Bolt



Chamfer



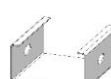
Flange Multi Connection



Service Hole



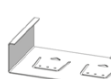
Slot Hole



Web Bolt + Index Hole(2)



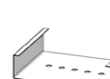
Double Tab



Lip Cut



Web Multi Bolt Hole



Swage



Swaged Service Hole

