

MF1600P FRAMER

"The LGS Industry's most cost-effective solution for Multi Profile Manufacturing"

Manufacturing Solution up to 1.6mm (16ga) Thickness

Suitable for a factory-based Operation for precision fast reliable Cold Rolled five (5) Selected Profile tools set for Steel Frame Manufacturing

A wide range of LGS Construction Solutions
Wall Frames | Joists | Trusses | Roof | Ceiling | Header

Typical Applications

The MF1600P Framer will manufacture LGS Frame Profiles up to 1.6mm (16ga) Thickness for construction projects ranging from Single Level up to Multi Level LGS Structures.

- Residential & Affordable Housing Projects
- Multi-Storey Buildings
- Prefabricated Offices
- Bathroom POD Modular Constructions
- Industrial Storage Units

PROFILE RANGE

63mm | 75mm | 90mm | 100mm | 140mm | 150mm | 200mm
2½" | 3" | 3½" | 4" | 5½" | 6" | 8"

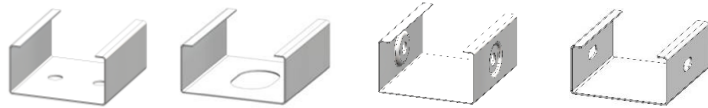
MF1600P Framer can manufacture profile web sizes 63mm (2½") to 200mm (8") with automatic configuration

PROFILE THICKNESS RANGE

The MF1600P Framer manufacture the profile in a thickness from 0.75mm (22ga) to 1.6mm (16ga)

ARKITECH have a wide range of Optional Profile Operations

OPTIONAL TOOL STATION OPERATION EXAMPLES



Double Web Bolt Hole | Elliptical Service Hole | Dimpled Flange Bolt Hole | Slot Hole

We can manufacture a Custom Tool Station Operation



ARKITECH MF1600P FRAMER

EXPANDABLE FEATURE - Optional Tool Operations

The MF1600P Framer is fitted with (11) Hydraulic Station Bays as Standard in Total and (9) Stations are installed as Standard Processes of the Framer.

MF1600P Framer is a fully featured cost-effective machine with all the tool stations you need to make this a very versatile manufacturing system for five selected profiles. More Profiles can be added Per Request.

The MF1600P is a heavy-duty framing machine of robust construction, proven reliability, efficiency and performance MF1600P is automatically configured to required Profile Web Size with a software-controlled servo motor drive.

VARIABLE FLANGE HEIGHT

The MF1600P Framer Profile Flange heights are variable from 41mm (1½") to 51mm (2") with a simple adjustment

ARKITECH DC2500 DE-COILER

The MF1600P Technology Package includes the DC2500 Automatic Feed 2.5 Ton (5500lb) De-Coiler controlled by a Laser Sensor. The De-Coiler with Electronic Variable Speed Soft/Stop Operation in both directions and a Hand-Held Remote Control at the MF1600P Framer.



YOUR TECHNOLOGY PACKAGE IS INCLUSIVE OF

- Arkitech Design and Detailing Software License
- Arkitech Manufacturing Software - Installed into the On-board PC/Monitor
- Spare Parts Kits (1) Pack Consumables Parts and (1) Pack Adjustment Tools
- Commissioning and Training for the MF1600P Framer
- Training Session at your Premises/Factory for our Arkitech Design and Detailing Software
- Software and Framer Technical Support

ARKITECH Precision Light Steel Framing System



Cut | Notch | Dimpled/Screw Rivet | Chamfer | Service Hole | Web Bolt + Index Hole (2) | Lip Cut | Swage | Pre Cut

